

# STEELIE<sup>®</sup>

## Pedestal Kit



### Steelie - The world's finest phone and tablet holding system

Whether you're typing, viewing, reading, or video chatting, the Steelie Pedestal Kit is a smart, stylish way to keep your tablet securely upright and conveniently accessible. When the attraction is this magnetic, things just click.

The Steelie Pedestal Kit is simple, versatile, and infinitely convenient. Its clean design and strong magnetic composition makes it easy to dock and re-dock your tablet on desks, countertops, tables, nightstands, floors - any smooth, flat surface. The Steelie Pedestal Kit uses two unique components to create this interactive viewing pedestal. The Steelie Tabletop Stand Component is a machined aluminum podium that fits tightly into a durable plastic base with silicone grips to create a stable platform. At the top of the stand is a steel ball which magnetically engages the Magnetic Tablet Socket to create the complete Steelie Pedestal Kit. The Magnetic Tablet Socket Component is also a strong, machined aluminum base that contains a powerful, circular magnet, ringed and centered with flexible silicone and backed with 3M<sup>®</sup>'s VHB<sup>™</sup> adhesive foam tape. Simply peel and attach it securely to the center of the back of your tablet, or its rigid case. When magnetically connected to the Tabletop Stand, the Steelie Magnetic Tablet Socket's silicone sections create a smooth glide and firm grip, so you can easily rotate the device from landscape to portrait position and it stays that way until you turn it again.

Simply place the Steelie Tabletop Stand on desks, airline tray tables, kitchen counters, coffee tables, and attach your tablet, fitted with the Steelie Magnetic Tablet Socket, and let the magnetic attraction do the rest. You can tilt the screen to any angle and rotate it from landscape to portrait orientation for optimum viewing. When you're ready to move on, just detach the tablet from the stand with a simple tug.

As an added plus, with the Steelie Magnetic Tablet Socket attached to the back of your device, it will attach to other convenient metal surfaces-refrigerator doors, steel shelving, stove hoods, filing cabinets, lockers, and toolboxes -so you can dock your tablet securely and keep it accessible and viewable wherever you go.

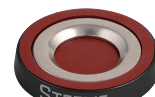
- ⊕ A simple way to hold smart technology. The Steelie Pedestal Kit uses our Magnetic Tablet Socket to connect your device to our Tabletop Stand.
- ⊕ Each Steelie Pedestal Kit includes one Steelie Magnetic Tablet Socket, one Steelie Tabletop Stand, an alcohol prep pad, and installation instructions
- ⊕ Steelie Magnetic Tablet Socket features a powerful neodymium magnet and silicon center to provide a strong grip and smooth glide
- ⊕ The neodymium magnet is safe for use with all phones and tablets
- ⊕ The Steelie Magnetic Tablet Socket component features 3M<sup>®</sup> VHB<sup>™</sup> adhesive tape for secure attachment to the center of the device or device's case
- ⊕ 3M<sup>®</sup> VHB<sup>™</sup> foam adhesive tape can be removed without damage to surfaces
- ⊕ Steelie Magnetic Tablet Socket must be attached to a rigid surface
- ⊕ The Steelie Tabletop Stand Component is a machined aluminum podium that fits tightly into a durable plastic base with silicone grips to create a stable platform.
- ⊕ The top of the stand features a steel ball which magnetically engages the Magnetic Tablet Socket to create the complete Steelie Pedestal Kit.
- ⊕ Adjusts and holds your mobile device in any viewing angle
- ⊕ Compatible with other Steelie system components
- ⊕ Steelie Pedestal Kit Components are sold individually:
  - Steelie Tabletop Stand - Why limit yourself to one location for your Steelie Tabletop Stand? Purchase an extra Steelie Tabletop Stand Component to keep one at home and one in the office.
  - Steelie Magnetic Tablet Socket - A great addition for households or workplaces with multiple devices. Securely attach the Steelie Magnetic Tablet Socket to any device for instant attachment to any Steelie Tabletop Stand or metal surface.
- ⊕ Dimensions: 3 1/16" (77.8mm) tall, 2 3/4" (69.85mm) Diameter base. Weight: 149g [5.26oz.]



Retail Packaging Dimensions:  
7.9" H x 4.1" W x 1.5" D  
200.7mm H x 104.1mm W x 38.1mm D

The Steelie Magnetic Tablet Socket contains a strong magnet. These magnets will NOT damage your tablet or phone. However, do not place near magnetically sensitive objects such as credit cards, pacemakers or computer hard drives. Steelie assumes no liability for damage to such objects.

#### Steelie Magnetic Tablet Socket



Top View



Bottom View